

LIGHT DUTY PRO-PULLER**Model CP2000****PRODUCT DESCRIPTION**

OK Champion's newest project, expertly manufactured by Timberland Equipment, addresses the problem of winch rigging in difficult manhole situations. The CP2000 Pro-Puller combines an underground pulling winch with an exclusive telescopic pulling frame to make manhole rigging a thing of the past.

With both devices mounted on an articulated boom, the pulling frame can be lowered into a manhole anywhere to the rear or side of the vehicle within a ten-foot radius on the 8,000 lb. version and a twenty-foot radius on the 25,000 lb. full size model. Unique hydraulic rotation resists side pull forces, and the articulated boom reaches in and out without needing to telescope.

The pulling frame is the proven design from the OK Champion Cable Scraper. It is capable of supporting the cable sheave cantilevered from the top of the manhole without additional support. This saves time and aggravation normally encountered when rigging cable sheaves in restrictive, overcrowded manholes and extremely deep manholes.

See other side for equipment features and specifications.

**OUR PEOPLE CARE ...
OUR EQUIPMENT IS THE PROOF**

TENSION STRINGING EQUIPMENT & ACCESSORIES CATALOGUE

LIGHT DUTY PRO-PULLER

Model CP2000

SPECIFICATIONS

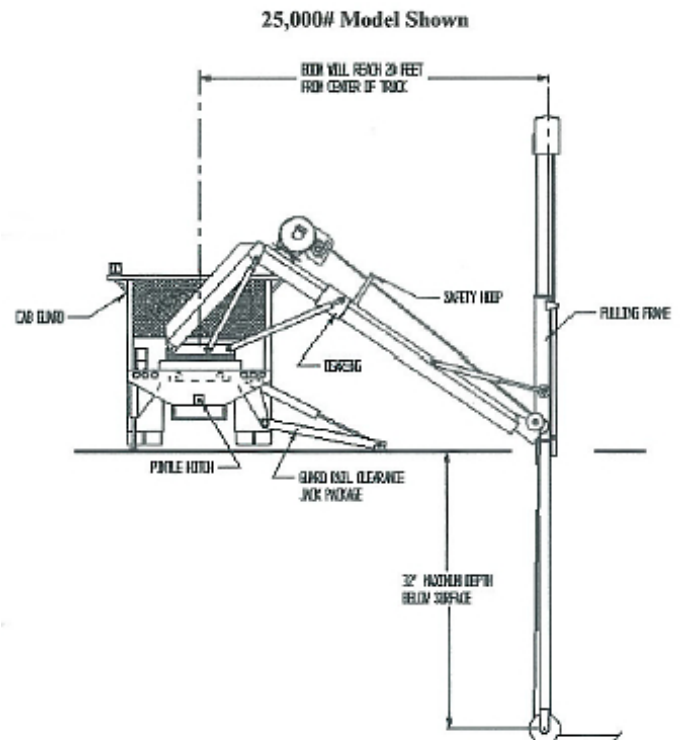
GMP "CD Lite" pulling winch
Platform Body
Extendable crane mechanism
Hydraulic Pulling
180-degree rotation and 12' extension
8,000 lb. bare drum pull
Installed and tested

MINIMUM CHASSIS SPECIFICATIONS:
(8000 lb. model)

15,000 lb. GVWR
84" CA
HD manual transmission with PTO provision
225 / 70R 19.5 Tires

EXCLUSIVE FEATURES

Set up winch pulling in different manholes hydraulically without manual set-up of sheave.
180-degree rotation and 12' extension to reach all manholes to side or in rear of vehicle.
8000 lb. bare drum pull
Radio remote control allows operator to see operation while standing in the clear.



**OUR PEOPLE CARE ...
OUR EQUIPMENT IS THE PROOF**

TENSION STRINGING EQUIPMENT & ACCESSORIES CATALOGUE